

PROJECT NEWSLETTER



CLIMATE
PLEDGE
ARENA

SEATTLE STEWARDSHIP

Shout out to all those that gave their time and donations to the Rainier Valley Food Bank (RVFB)! RVFB's mission is to nourish with good food, empower with knowledge, and serve with compassion. RVFB is currently the busiest food bank in Seattle, out of 26 area food banks, operating from its tiny 1,200-square foot facility. The food bank fulfills over 6,000 requests for food each month. Learn more about our impact on the community. More information at www.rvfb.org People who gave also had the opportunity to track their donations as part of the, Dear 2020 campaign to complete three million acts of goodness together in Benevity.



TEAM MEMBER SPOTLIGHT



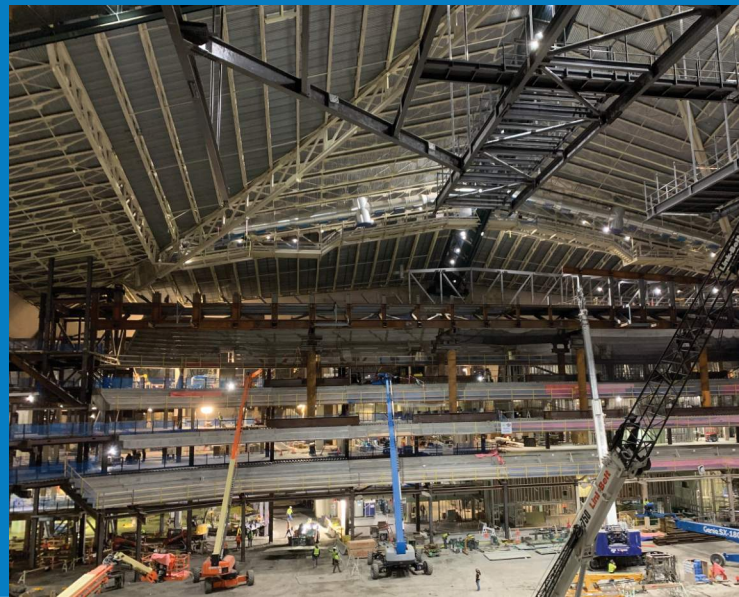
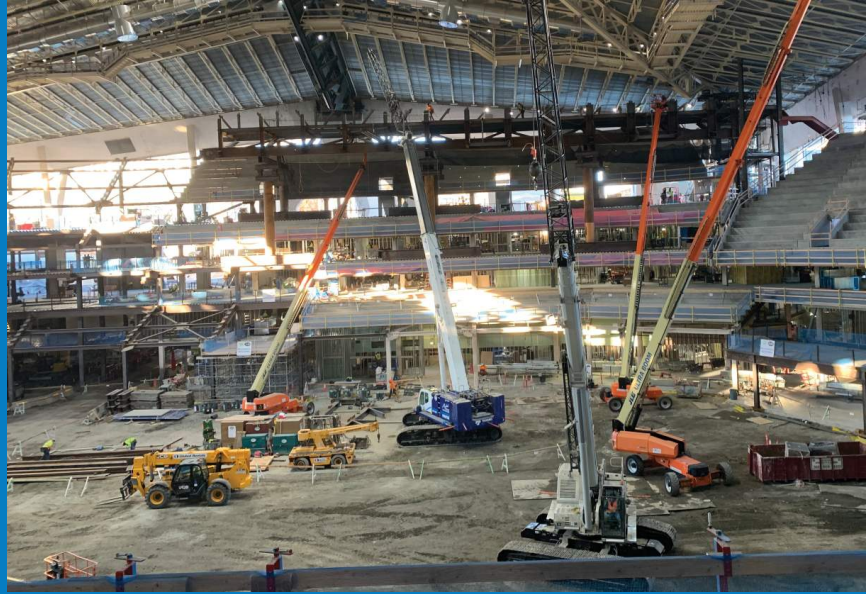
Don Hitch started in construction in the 1980s. He built custom homes in South Seattle for 20 years before joining Mortenson in 2007. He started as a journeyman carpenter and worked his way up to a superintendent, which he has been for the last 4 years. His favorite part about this project is the constant challenges. One thing Don values is leading by example which truly embodies the Mortenson principle of "do the right thing". When he tells someone he is going to do something, he is going to do it and expects the same in return. Don's primary role on the project is a concrete superintendent. He was a huge part of the success of the zero defects embeds installs.

As a native Seattleite who went to many a Seattle Totem hockey game back in the day, he is quite proud to be part of this project due to the uniqueness and history. It ranks up there with his other favorite projects he's worked on like ShoWare Center and the Seattle Seawall.

STEELing THE GAME

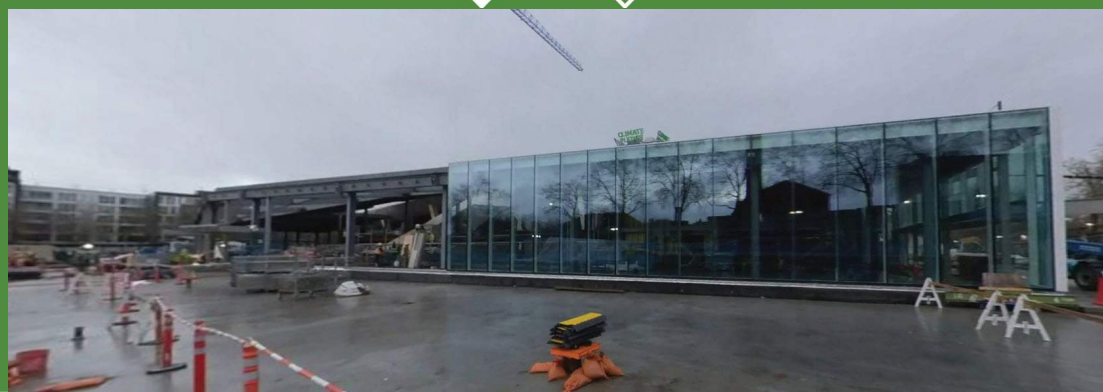
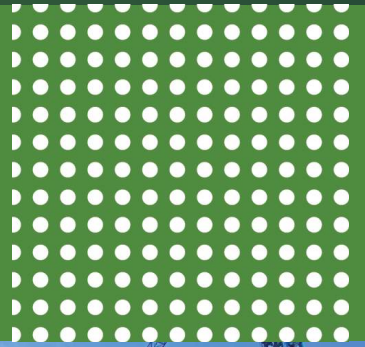
The west bridge truss now completely spans from the elevator cores on either end. The bridge level has been shored by reused TRS columns (talk about a climate pledge!) during the construction of the bridge. As the bridge has been erected, the SPS (sandwich plate system) has been installed. The SPS makes up the floor of the bridge level and consists of two steel plates with an elastomer in between that is 1 1/8" thick. They were fabricated in South Korea and shipped to Seattle back in July on four different boats. DCCI is continuing to erect the infill steel and detailing out the bridge.

The catwalk and rigging grid started erection in the northeast corner and has worked its way south. We are approximately 50% erected and tied into two locations of the existing catwalk. The electrical rough-in install along the catwalk will begin shortly as they turn over each of the different sections.



THE SAGA OF THE TEMP ROOF SUPPORT CONCLUDES

Sixteen months after the roof was first temporarily supported, and just over a year after jacking was complete, the 44-million-pound roof became 100% supported by the permanent structure. The south buttress supports were the last remaining temporary supports and, if you are out on-site, you will see them getting removed! The removal of these supports opened up the Space Needle level and allowed for the team to start the leave out erection in that area. Another piece of temporary roof support that you may see still onsite is the south buttress collar, but don't worry; It was jacked down early in the fall and is no longer supporting the roof. Although some fought valiantly to keep the collar and incorporate it as part of the final design, it is being torched out piece by piece. The temporary roof support will always be a part of the construction of Climate Pledge Arena, but now it is time to move into a new phase, one that includes a permanently supported roof.



MOST. UNIQUE. PROJECT. AWARD.

The Climate Pledge Arena VDC team uses Revizto which is a cloud-based visual collaboration software that we utilize to integrate all the trade partners' 3d models in a consolidated navigable 3D environment.

From the Revizto article:

What was/is the key to you and your team's success on a project?

The key to our success on the Climate Pledge Arena has been empowering team member communication and innovation. We knew that fostering creative ideas was critical to ensuring we met our goals as a team while collaborating remotely. We reviewed design options in the model and virtual reality with our key stakeholders which facilitated faster decision making. We also brought more team members into the model environment, which increased proactive problem solving before issues arise. Lastly, we continue to focus on helping our operations teams successfully plan their transition into the building by understanding the venue before it's even physically built.

What does collaboration mean to you?

Collaboration means creating an environment where there are no barriers to solve a problem, partnering cross-functionally in how we come together to work toward a solution. To be truly collaborative, everyone needs to be equally empowered to drive the success of the project, no matter what their role is.

Did Revizto come into play, and if so, how?

We utilized Revizto on the Climate Pledge Arena project in Seattle, WA, where the future NHL team The Seattle Kraken will play. The \$1 Billion (current estimate), 800,000 square foot project included a nearly full demolition except for the previous arena roof, which is incorporated into the new design. While holding up the existing roof, we removed the previous interior structure and excavated the foundation to increase the depth and capacity of the new arena.



"We leveraged Revizto to coordinate the temporary structure with the permanent structure, mechanical, electrical and plumbing (MEP) an nearly every other building's scope. Since the software is extremely user-friendly, it has enabled us to engage a wider user audience which has fostered greater collaboration on the project. This has given us more "eyes" on the design and has increased our ability to identify design challenges upstream before they have an impact on the schedule." – Travis Peterson, Integrated Construction Manager at Mortenson



revizto awards

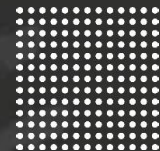
collaborators of the year



Mortenson

Travis Peterson

Integrated Construction Manager



2020 WINNER

"What's more challenging than holding up a 44-million-pound roof? Holding up that roof during a global pandemic! We were challenged every day to push the boundaries on how we successfully functioned as a team while navigating COVID-19 and the impacts it has had in the workplace. We have continuously tested new and improved ways to be better remote collaborators and help drive decisions to keep the project moving forward despite the circumstances." – Travis Peterson

MOST UNIQUE PROJECT

SAFETY: 2021

Promoting a Safe and Healthy Workplace Culture

In 2020 COVID-19 changed the way safety in the construction industry works. Over the past year the Mortenson Climate Pledge Arena Team has taken more responsibility for workers health and safety than ever before. We implemented programs that protected our team members and provided guidance to our customers, trade partners and vendors to ensure work can continue safely while meeting the constantly changing requirements and restrictions established by our governing authorities. We created a robust COVID-19 response plan that was ultimately used by contractors all around the state as a best practice. Facing immense uncertainty, the innovation of our team members allowed us to safely work, even during the beginning of the COVID-19 pandemic.

This year you will see a shift in the way our team manages, promotes, and supports the Climate Pledge Arena safety culture. This shift will be led by enhancement of our prevention-based safety programs that emphasize education, craft engagement, task specific training, planning, recognition, and identification of issues before they cause injury. 2021 will bring many challenges but also successes and we ask you all for your continued dedication and commitment to Zero Injuries. - NO ONE GETS HURT!

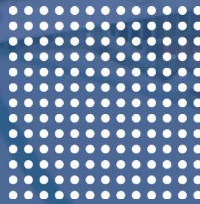
Life of Project Safety Stats:

First Day First Hour Orientations Complete: 3,216

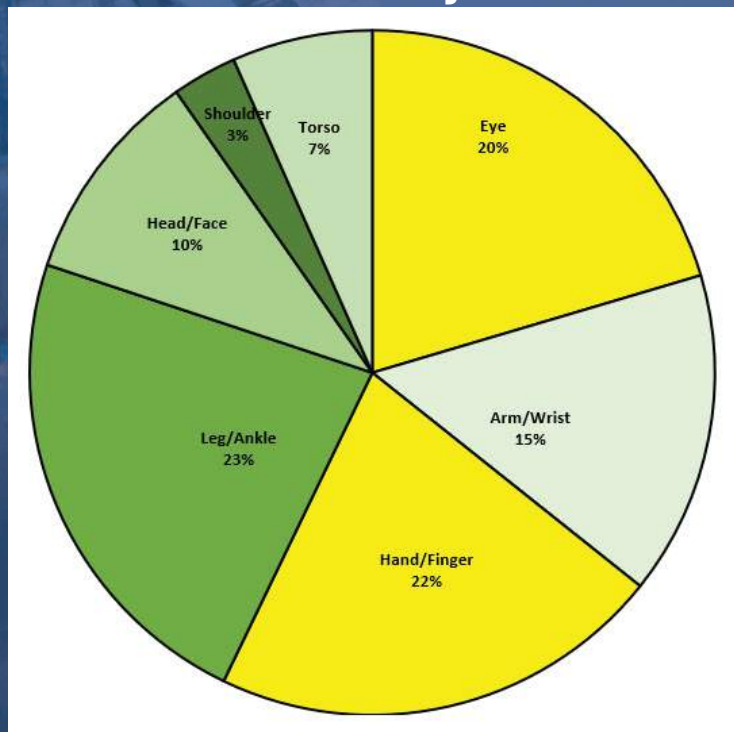
Total Hours Worked: 1,821,550

542 Safe Workdays

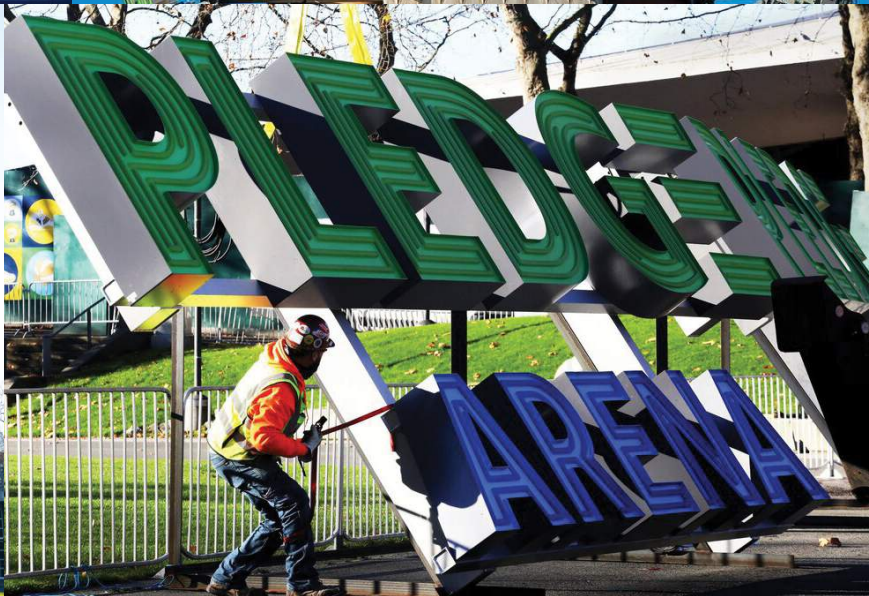
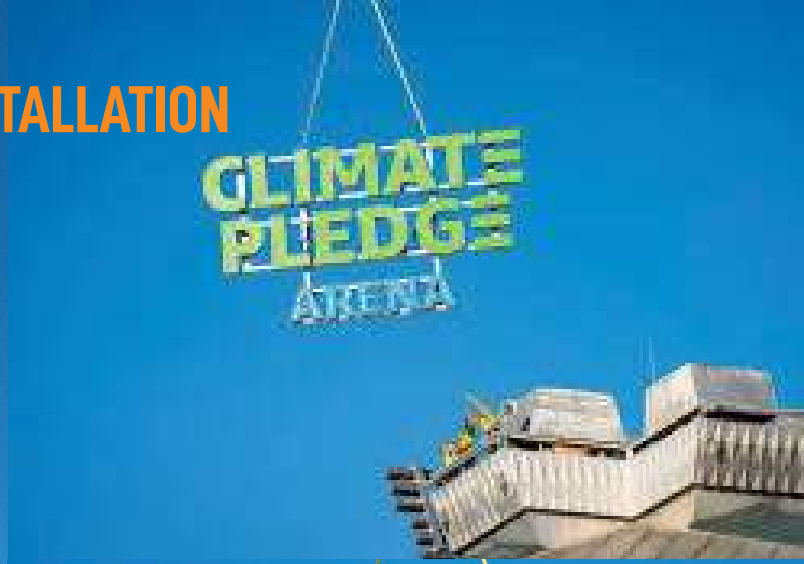
3235 Hazards Corrected



Minor & Moderate Injuries to Date



CLIMATE PLEDGE ARENA SIGN INSTALLATION



CHECK OUT THE KRAKEN-GRAM
[@CLIMATEPLEDGEARENA](#)
[@SEATTLEKRAKEN](#)



CONTACT

Greg Huber
Construction Executive
763.287.5909
greg.huber@mortenson.com